



REFERENCE:
L3418

COUNTRY OF ORIGIN: PRC

WARNINGS FOR THE USER:

Warning!

-Do not look directly into the light - it may cause damage or even loss of vision.

-Install only in specialized workshops or professional services.

- Use in open space only.

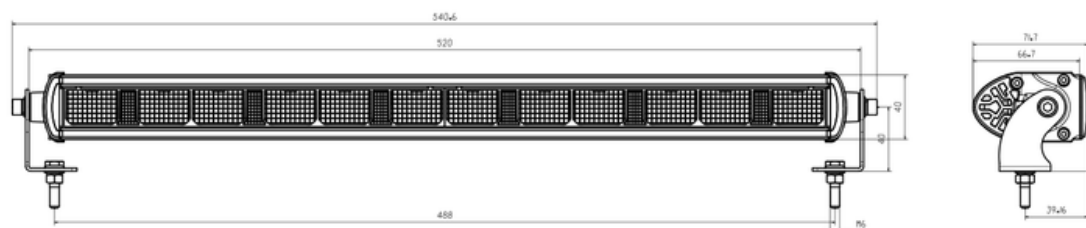
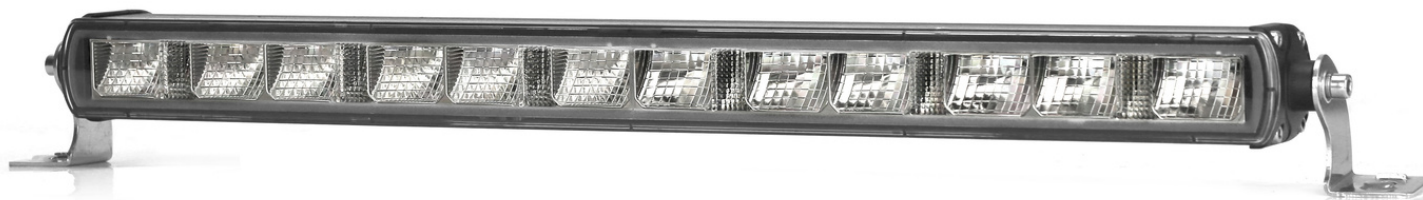
- Use in accordance to the purpose.



www.truck-kamar.pl

HEAD LAMP LED 21" + POSITION BOTTOM LED

PHOTO AND TECHNICAL DRAWING:



TECHNICAL SPECIFICATIONS:

MATERIAL	LED/LM QUANTITY	MOUNTING	CABLE	FUNCTION	WATT	VOLTAGE	CERTYFICATES	PACKING/WEIGHT
» Lens: PC » Housing: AL	» 12 » 3340 LM	» screw	» 250mm	» DRL » Driving lamp	» 3W » 47W	» 12V/24V	» ECE R10 » ECE R148 » ECE R149	» cart. dim: 605x76x88 mm » lamp weight: 1000g » 10 pcs/bulk box

INSTALLATION INSTRUCTIONS:

- It should be used exclusively in accordance with intended use.
- Mount exclusively in specialized workshops.

- The connection between the lamp and vehicle's installation should be isolated with heat-shrink tube, or, alternatively, with isolating tape, to avoid getting water and moisture to the copper wire of the lamp, which can damage electronic components. When it comes to lamp and plug, the plug should be mounted safely.

- Do not cut off tinned ends.
- Lamps must be installed only in accordance with UNECE regulations

We reserve the right to change technical data and any errors. Photos and specifications are for reference only, and the actual product may vary slightly. Reproduction in whole or parts of the catalog without written authorization is prohibited.