



REFERENCE:  
**W-15**

COUNTRY OF ORIGIN: PRC

**TECHNICAL SPECIFICATIONS:**

- 15pin 24V,
- black color,
- carton dimension 350x280x330 mm,
- 50 pcs in bulk box
- weight: 282g

Warning and installation instructions:

- Use in accordance to the purpose.
- Install only in specialized workshops or professional services.
- The connector is used to connect the pneumatic brake system of the vehicle with the trailer system.



**www.truck-kamar.pl**

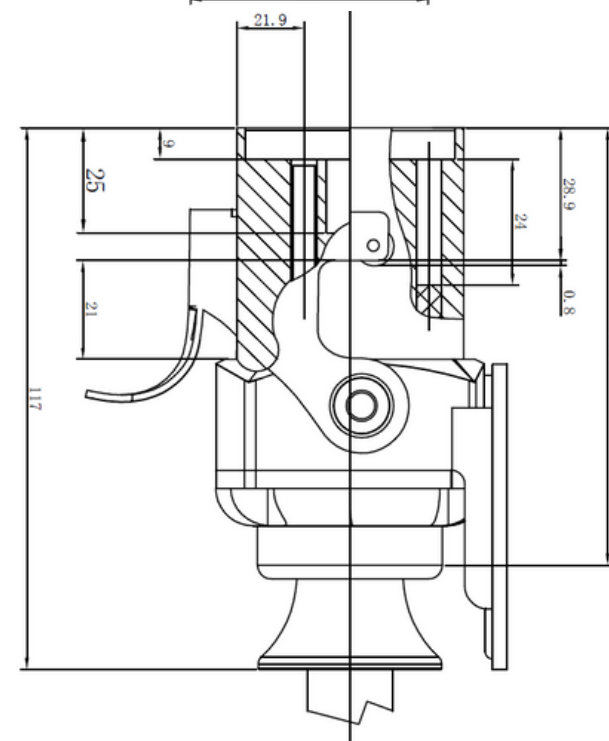
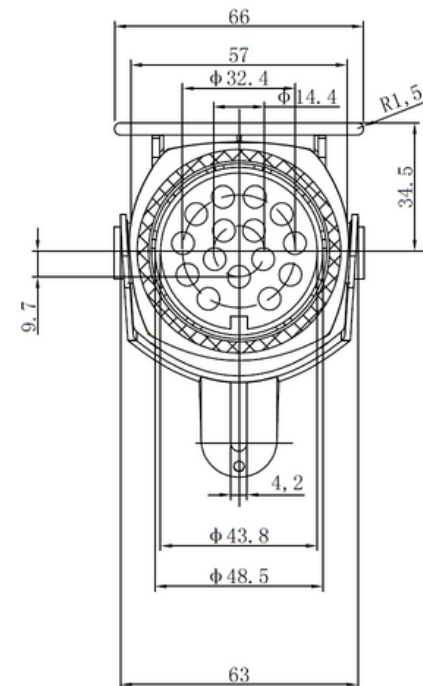
PHOTO:



MARK	FUNCTION
1	Left Turn Signal
2	Right Turn Signal
3	Rear fog lamps
4	Ground (-) for pin 1 - 3 and 5 - 12
5	Tail lamps left side
6	Tail lamps right side
7	Stop lamps
8	Reversing lamps
9	+24V permanent
10	Brake wear indicator
11	Indication of applied parking brake due to loss of air pressure
12	Lift Axle
13	ground (-) for pin 14 and 15
14	CAN H, Not for EBS or ABS
15	CAN L, Not for EBS or ABS

**PLUG 15 PIN 24V SCREW TYPE**

**EAC**



We reserve the right to change technical data and any errors. Photos and specifications are for reference only, and the actual product may vary slightly. Reproduction in whole or parts of the catalog without written authorization is prohibited.